

Kohala Mountain News

Vol. 23, No. 04

About Kohala, For Kohala

April 26, 2024

Māhukona Boat Crane Blessed



Photo by Lisa Hallett

By Jessica Andrews

On Saturday, April 6, members of the Kohala community gath-

ered at the Māhukona Wharf for a blessing of the refurbished boat crane. They were joined by Hawai'i

County Parks and Recreation Director Maurice Messina with a blessing by Pastor Kimo Ho'opai. The proj-

ect is ongoing, and a date has not yet been set for the crane to be open for public use.

KHS Students Aloha 'Āina on Kamehameha's Homeland



Photos by Joe Carvalho

Student participating in the Hapu'u workday. Back row, left to right: Isaac Salvador-Libron, Jermiah Mederios, TeRongomau Kawe, Pela Terrel, Liana Pine-Ramos, Camille Fuertes, and Sydnie Marquez. Front row, left to right: Kayzen Ittner, Kenneth Matsuda, and Isaiah Antonio.

Story and photos by Toni Withington
Kohala High School students put action to their words of protecting the land by working with

Kohala Lihikai to clean the landscape around Hale O Ka'ili heiau at Hapu'u Bay. The area is part of the
See KHS, Page 2

Five-lot Subdivision Proposed on Pololū Valley Rim

By Toni Withington

KP Holding LLC, a subsidiary of Surety Kohala Corporation, has applied for a five-lot subdivision on the rim of Pololū Valley. The move comes four years after the company attempted to create a 10-lot subdivision on the land in conjunction with the State Department of Land and Natural Resources. That plan met a storm of community protests and never moved forward.

Instead, a year later KP Holding consolidated two parcels mauka of the Pololū Valley lookout totaling 195 acres, then divided them into two parcels of 23 acres and 172 acres. It is these parcels the company has proposed dividing into five lots of more than 20 acres each. Because the existing agriculture zoning allows lots of 20 acres, the subdivision does not need review

by the Leeward Planning Commission or any other public hearings. The approval is up to the County Planning Director Zendo Kern.

The director sent the proposal application to various government agencies for review and although the comments were not all received by KMN deadline, the Department of Water Supply DWS did not support the plan since it is located beyond the department's existing water distribution system.

"Extensive improvements and additions, including source, storage transmission booster pumps, and distribution facilities must be constructed," the DWS report said.

In light of that, Director Kern informed KP Holding that it must apply for a variance to the County

See Pololū, Page 2

Kohala Mountain News
Box 639
Kapa'au, HI 96755

ECWSS
POSTAL CUSTOMER



KHS from Page 1

four and a half miles of recently preserved coastal lands that are recognized as Kamehameha's homeland, his kula iwi.

The students trimmed vegetation and picked up trash around the perimeters of the heiau under the guidance of Joe Carvalho, Chairman of Kohala Lihikai, who helped direct the students' efforts. Ralph Galan, kahu of the heiau was not available that day. Samuel Carvalho also assisted with the overall cleanup.

The non-profit Kohala Lihikai, which has for years been stewarding several parcels of open space coastal land, worked with the students since last fall to organize the first workday and create signs to replace the worn-out ones.

Student leaders of the Stewards of the Future group are Camille Fuertes, Sydnie Marquez, Liana Pine-Ramos, Kazen Ittner and Isaac Salvador-Libron. They were directed by Dean Snelling.

Four weed whackers opened up overgrown areas at the parking lot and on the public access trail alongside the heiau. The signs they cre-

ated at the school will be installed on their next visit.

The project falls under the Academy of Sustainability of Kohala High School, which partners with a non-profit organization called Center For Tomorrow's leaders.

"Our main goal for this year was to think of things in our community that we can help with and ways to give back to our community," said Camille Fuertes, leader of the project. "Our group, Stewards of The Future, thought of Hapu'u as special to us and wanted to find a way to give back and mālama the area. The main goal for our group is to help maintain this area for more generations to come and know the knowledge behind these special places."

The students have been meeting regularly during the school year to plan the project. Having won first place in the school's competition with other projects, the students will compete in a statewide contest.

On the day of the cleanup, the dirt road to the coast was in such poor condition that the students had to hike down and back from the Halawa Cemetery.

**North Kohala Community Resource Center Update
Interview with the new Executive Director, Leelen Park**



Photo courtesy of North Kohala Community Resource Center

Leelen Park is the Executive Director of the North Kohala Community Resource Center.

By Tom Morse

Leelen Park is a Kohala native. Son of Rodney and Karla Park, he grew up in the Kahei house-lots. He went through the Kohala school system and graduated from Kohala High School in 2003.

At first, he wanted to be a chef. He took a culinary program in a community college. But he found that he didn't enjoy cooking as much as he thought he would. As many in his family were teachers, he enrolled at U.H. Manoa to get a degree in Education. As part of that program, he began as a student teacher at Hilo High School. He found that teaching was also not his calling.

At U.H. Manoa he finished his Bachelor's Degree in Teaching in 2010.

In 2011 the Aloha Council of the Boys Scouts of America, made him an offer to be a district executive for the Hamakua-Kohala and Kona districts.

He progressed with the Boy Scouts to where he was managing their activities for the whole island. He found that he loved working with volunteers and bettering the community through non-profit organizations.

Leelen left the Boy Scouts at the end of 2018 and, in 2019, joined the Bay Clinic, a community health center in Hilo, as Development Manager. In 2020, at the start of Covid-19, he was let go.

Then he was offered a position as the Covid-19 Emergency Project Manager at the Food Basket in Hilo.

In 2021-22 he organized over 170 Ohana Food Drops all over the island. He found this job exciting and fulfilling, because this effort was helping people who were struggling.

When that project wrapped up, The Food Basket offered him an opportunity to manage the DABUX program, a program of The Food Basket that provides SNAP users with a fifty percent discount on locally grown fruits and vegetables at select retailers. Through the program, retailers are reimbursed for the discount given to the customer.

The Food Basket then reimburses the growers for the discount. The program serves as a triple win as it allows SNAP customers to stretch their SNAP dollars further, enables retailers to sell more products, and allows local farmers to sell more produce to these retailers.

The Food Basket promoted him to Development Director in early 2023. Leelen was given the responsibility of managing a 24.5-acre piece of land that was purchased to establish an Agricultural Innovation Park and Food System Campus. This was a significant project for The Food Basket that required his efforts to launch a \$140 million capital campaign.

In November of 2023 he was contacted by Nathan Trump, President of the NKCRC, asking if he would be interested in becoming the Executive Director. As Leelen had been away from Kohala for twenty-one

See NKCRC Page 3

Pololū from Page 1

Code which would allow for the catchment and storage of rainwater for each lot. Kern deferred further action on the subdivision to May 19 to allow the subdivider time to comply with the code's minimum water requirements.

In order to qualify for a water catchment variance, the owner must show that the average annual rainfall is greater than 60 inches. Each lot would be required to build a water tank with at least 6,000 gallons capacity and a separate tank for firefighting purposes of at least 3,000 gallons. The variance would prohibit further subdivision of the lots.

In another agency review, the Department of Public Works (DPW) said the subdivision plans must identify and label all watercourses and drainageway as areas of flooding. Several streams run through the property. Since the Akoni Pule Highway pavement is wider than the government easement and encroaches on KP Holding property, that issue needs to be rectified, DPW said. In his letter to KP Hold-

ing, Kern said those requirements would be imposed as a condition of tentative subdivision approval.

The State Department of Health required an Environmental Site Assessment be done on Phase I and that, because the agricultural lands were used for growing sugar, an investigation would be needed to identify sites that "may have resulted in the releases of hazardous substances, including oil or chemicals."

The State Historic Preservation Division (SHPD) said because the land was previously impacted by land clearing activities, no historic properties would be affected. Division Administrator Alan Downer did admit that "the current project area has not been subject to any previous archaeological inventory."

A KP Holding representative was asked for comment on the subdivision but did not reply.

Public comments on the proposed subdivision may be made to Planning Director Zendo Kern by email at planning@hawaiicounty.gov or by post at 101 Pauahi Street, Suite 1, Hilo HI 96720.

10TH YEAR ANNIVERSARY! 5/8/24

Come join us May 8th to celebrate 10 years serving the Kohala Community.

Live Music & Entertainment
Storewide Sale
Giveaways
Free Drinks

MAHALO KOHALA!

Mon - Thur 9-6, Fri 9-8, Sat 9-6 & Sun 9-5

15% OFF STOREWIDE SALE!



Ready for a Burger?



bamboo

Please call for a reservation
889-5555

NKCRC, from Page 2

years, he wasn't really knowledgeable about the NKCRC.

He learned about the activities of the Center and saw this opportunity to come home, be reacquainted with the community that raised him, and have a chance to give back to Kohala. "I am honored to be chosen," he said.

The North Kohala Community Resource Center

The Board of Directors, all volunteers, includes:

Nathan Trump, President; Vicky Kometani, Vice President; Beth Bohn, Secretary; Denni Keyes, Treasurer; Cherie Haunani Carvalho; Wendy Nickl; and Jay Vega.

Youth Directors include:

Jensel Merice Jose and Kenneth Matsuda.

The Center was started in 2002. There are sixty-four active projects. It provides an opportunity for Kohala projects to receive non-profit status for tax-exempt donations. For more info, see nothkohala.org.

A challenge for the Center has always been to raise enough money to pay for its own operations. It has a building to maintain, plus five employees. Besides Leelen, Michelle Kawai is Director of Operations, and Annalene Williams is the Projects Coordinator.

Also, the Center manages the Kohala Resilience Center (at what was formerly known as The Barn, behind Luke's). Kathy Matsuda is the Coordinator, with the newest

edition Kimilee Vakuta, the Kohala Resilience Hub Assistant.

Sources of revenue for the Center are:

- A small percentage of the money granted to the projects they represent
- The annual auction and golf tournament
- Donations from the Kohala Community
- Grants to the Center itself for operations

Leelen says, "We encourage all of the dreamers, and those who genuinely want to make a meaningful difference in our beloved Kohala community, to reach out to us and let us help you make your dreams a reality."

Here is the process to become a new Sponsored Project of the NKCRC:

1) Initial Discussion: NKCRC may schedule an initial discussion with you to learn more about your project idea, goals, and how it aligns with their mission. This can be done through a meeting, phone call, or email exchange.

2) Submit Application: If NKCRC determines that your project aligns with their mission and priorities, they may ask you to submit a formal application. This application may include details about your project, budget, timeline, intended outcomes, and how you plan to measure success.

3) Review Process: The NKCRC team will review your application to assess its feasibility, impact, and alignment with their goals. They may also consider factors

such as community need, available resources, and potential partnerships.

4) Approval: If your project is approved, NKCRC will notify you and work with you to finalize any necessary agreements or paperwork. This may include a sponsorship agreement outlining the terms of the partnership, responsibilities

of each party, and any financial arrangements.

5) Implementation: Once the sponsorship agreement is in place, you can begin implementing your project with the support of NKCRC. This may involve regular communication with NKCRC staff, reporting on progress, and seeking assistance or guidance as needed.

Kohala Resilience Hub 'Ohana Fun Day and Resilience Fair

Story and photos by Kathy Matsuda
On March 9, the Kohala Resilience Hub invited the community to their

'Ohana Fun Day with games and information from a variety of groups focused on health and wellness.



Master Gardeners gave helpful planting tips and distributed tomato plants.



United Healthcare sharing Healthcare plans. Jessica Arruda provided an eye-catching game of tossing the toilet paper.



Money does grow on this tree.

2 Ways to Earn

4.75% APY*

9 Month Share Certificate

4.25% APY*

18 Month Share Certificate





Scan the QR code to start earning today!

Open a high-earning Share Certificate from HCFCU & watch your savings grow!



Hawaii Community
FEDERAL CREDIT UNION

► hicommfcu.com | (808) 930-7700

Federally insured by NCUA

*APY = Annual percentage yield. APY is accurate as of September 5, 2023 and is subject to change without notice. Minimum opening deposit for the 9-month certificate is \$1,000.00. Minimum opening deposit for the 18-month certificate is \$500.00. An early withdrawal penalty may be imposed for early withdrawals. Fees may reduce earnings on the account. Certain terms and conditions apply. Membership in the Credit Union is required. Federally insured by NCUA.

Water Meter Moratorium to Continue

By Toni Withington

A lifting of the moratorium on new water meters continues to be off in the future, Kurt Inaba, head of the Engineering Division of the Department of Water Supply (DWS), told a gathering last month. Nine members of the Utilities Group of the North Kohala Community Development Plan (NKCDP) arranged the Zoom meeting with Inaba to talk about the district's water delivery system. The long-delayed lifting of the moratorium has left many families having to share one meter for multiple homes and forced others to drill wells or build catchment systems.

Completion of the construction of the well and water tank in Halaula was expected to provide redundancy, or a backup system, in case a well is temporarily out of order. With two wells at the same location in Hawi, the district has been without backup for decades. The moratorium was imposed because DWS considered itself unable to guarantee sufficient water to cover many additional meters without redundancy.

Inaba reaffirmed the DWS commitment to end the water meter moratorium for newly created lots as soon as the Halaula well is thoroughly tested and found capable. The new well has had problems since it was brought online in July

of last year. It is not working, and, though still under warranty, it could take six months to repair. This means testing might not be complete for another nine months. Redundancy won't be reached until the Halaula well is functional and connected to the water main form the Hawi wells, Inaba said.

When asked who would be eligible for new water meters after the lifting of the moratorium, Inaba said the top priority, as it is now, would be for new affordable housing. Next would be permitted houses that share meters, and finally new subdivisions.

Hawi #2 well, which was also out for four months, is now working. The department is currently undergoing an island-wide inventory and inspection of all its distribution lines with the help of grants from the State Safe Drinking Water Division and FEMA.

Another thing being investigated, Inaba said, is how long the water in the tank reservoirs can last if a wildfire or other hazard interrupts the electric power to the pumps. Right now, only one generator is available to Hawi Well #2 for backup power, even so, restrictions on water use might have to be called for during a long power outage.

While the North Kohala

Community Development Plan (NKCDP) calls for an upgrade of all the old distribution lines, the only project on the department's Capital Improvement Program (CIP) budget for Kohala is replacement of the antiquated line on Beers Road, which has been subject to 18 major breaks in the past eight years. The CDP's water group approached DWS with the problem on Beers Road in 2014. Replacement and extension of the Beers Road line was then put on the departments 2019

CIP budget. It was later pushed forward to 2023 and more recently to 2027. Inaba said a plan has been drafted and sent to the USDA and the State's Historic Sites division for environmental review.

Asked about the recent high number of outages of island wide pumps, particularly in Kona, he said it was multiple problems of pumps, well casings, and the difficulty getting spare parts.

"Let's hope we do better this year," he said.

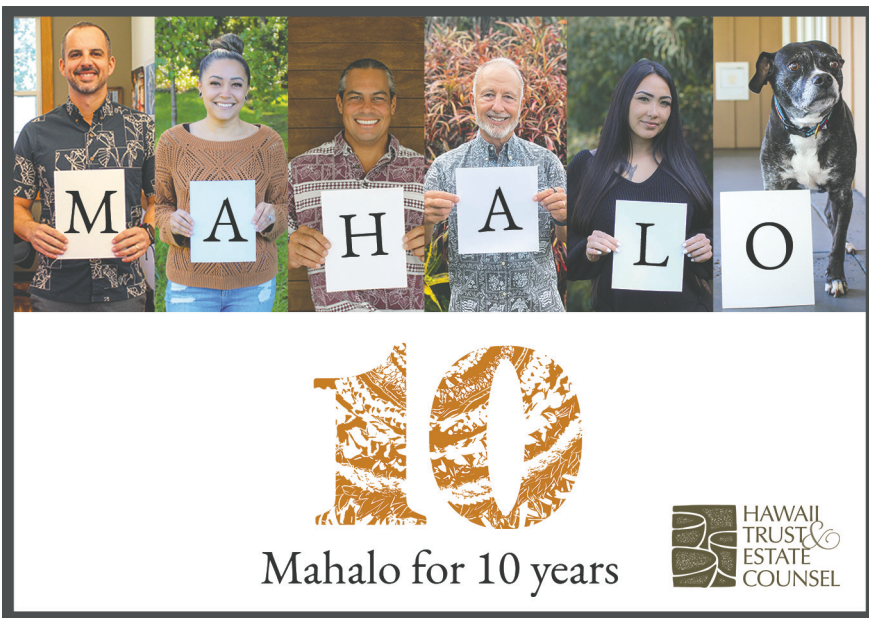


Aikane
Hawi, North Kohala, Big Island, Hawaii

- MAINTENANCE
- NURSERY
- LANDSCAPING
- TREE WORK
- CHIPPING
- IRRIGATION
- FENCING
- TRUCKING
- ROAD WORK
- ...AND MORE

808-430-8198
aikanenursery.com

Contractor CT-35671, Isa Certified Arborist - Brandon Belmarez WE-12585A



M A H A L O

10

Mahalo for 10 years

HAWAII TRUST & ESTATE COUNSEL



Kohala Dental Center

Your smile is our top priority

- New Patient Exams • Teeth Whitening
- Crowns & Bridges • Full/Partial Dentures
- Veneers • Composite Fillings • Implants
- Root Canal Therapy • Wisdom Teeth

Welcoming New Patients
Call us today to request an appointment
kohaladental.com
808-889-6277



DR. ARDOLF & ASSOCIATES
Naturally Vibrant Health

Naturopathic Physician

- Full Medicinary (Physician-grade supplements)
- Herbal Medicine
- Homeopathy
- Hyperbaric Therapy
- Hydrotherapy
- IV Medicine
- Ozone
- Ultrasound

New Location
For appointments call: 808 498-4018
Open 12-5, Monday - Friday



Jewelry
Art
Toys
Books
Pottery

ELEMENTS
JEWELRY and FINE CRAFTS

11-4:00 Tues-Sun Hawi, Hawaii 808.889.0760
elements@elementsjewelryandcrafts.com

Letters

Bike Tour Legislation Proposed

Aloha kakou to the North Kohala Community,

About 15 months ago, Cindy Evans was contacted about the use of our narrow winding roads by bike tour companies, which were causing stress and dangerous situations for our residents. These roads have cliffs, steep drops, falling rocks and no shoulders. Many people shared near-miss stories. These roads are not back roads; they are roads residents use daily and already what many consider a challenge to drive.

Cindy has done her homework and created a bill addressing these concerns. Bill 125 excludes commercial bicycle tours (not individual cyclists) from using the Kohala

Mountain Road and part of the road out to Pololū Valley. This bill is supported by the local police whom I spoke with, the chief of police, and half of the County Council members. Cindy Evans has worked hard to word this bill correctly, making sure it is enforceable. I've watched her at work, where she maintains a calm and collaborative demeanor.

I've testified four times. During the last discussion by the Council, Cindy was going to work with a colleague to create guidelines to clarify specifics. The bill is planned to be reviewed again on May 1.

If you would like to voice how you feel, please write to: counciltestimony@hawaiicounty.gov.

Better yet, come to Cindy's office

at the old Courthouse in Kapa'au on May 1 at 9:00 a.m. to share your voice and tell the County Council about your experiences with groups of bicyclists. There have been too many near misses. Commercial bike tours who provide tourists with a bicycling experience can move to safer locations.

Check with Jessica, Cindy's Council Aide, at 808-889-6512 to get assistance with providing written testimony, Zoom testimony, or live remote testimony at the Old Courthouse. Our governing officials need to understand that our community safety is priority over commercial tourism. PLEASE SPEAK UP.

Mahalo, Rande Golden

Hawai'i State House of Representatives Update

From the Desk of District 7 Representative David Tarnas

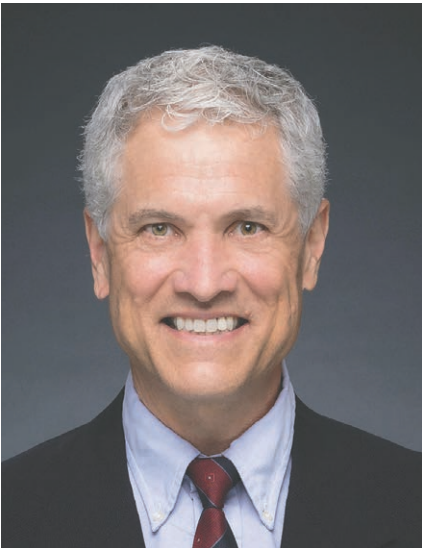


Photo courtesy of David Tarnas Representative David Tarnas speaks for North Kohala as a member of the Hawai'i State House of Representatives.

Aloha. As we enter the final weeks of the 2024 legislative session, I'd like to provide an update on some important bills that are making their way through the legislative process.

To respond to concerns about how emergency powers are authorized and used, the legislature is considering measures to clarify the powers of the chief executive of the state and county administrations and provide public notice and reporting on public fund expenditures.

HB 1902 clarifies that the governor's and mayors' emergency management powers shall be consistent with the state constitution; clarifies the scope of the comprehensive emergency management plan; clarifies the powers of the governor and mayors to extend or terminate a state of emergency; shortens the duration of price control periods from ninety-six hours to seventy-two hours; and amends the emergency management law to protect tenants, mortgagors, consumers, and residents for certain periods of time after the issuance of a gubernatorial or mayoral emergency proclamation.

SB 2908 clarifies the powers

of the governor and mayors to extend or terminate a state of emergency; clarifies when proclamations take effect; prohibits residential rent increases in areas subject to emergency declarations or severe weather warnings; and shortens and clarifies the duration of price control periods and the prohibition against residential-tenancy terminations.

SB 2512 establishes notice and reporting requirements for the expenditure or use of public resources by the governor, pursuant to the governor's emergency powers.

To respond to the critical need to improve the State's wildfire preparedness and increase measures to prevent wildfires, the legislature is considering numerous measures including the following:

HB 1842 increases the maximum fine for violations of fire protection laws; specifies that each day a violation exists or continues to exist shall constitute a distinct and separate offense; raises the criminal penalty for the offense of arson in the fourth degree to a class C felony if the offense was committed during the time period and within the geographic area in which a red flag warning was in effect; and provides that the state of mind requirement with respect to the attendant circumstance that the red flag warning was in effect is negligence.

SB 2085 and HB 1843 establish and fund the Office of the State Fire Marshal to direct fire protection efforts statewide.

SB 3344 and HB 2700 establish and fund the Hawai'i Wildfire Relief Fund and Hawai'i Wildfire Relief Fund Corporation to provide compensation for property damage resulting from catastrophic wildfires in the State; requires the Corporation's board to report to the Legislature.

SB 2922 creates a process for electric utilities to develop and submit wildfire protection plans to the Public Utilities Commission for approval and allows the recovery of related costs and expenses through securitization while avoiding a disproportionate impact on a specific

ratepayer or county. The bill also requires public utilities to report wildfires potentially caused by or occurring in connection with their operations.

SB 582 makes emergency appropriations for certain FEMA-ineligible and FEMA-eligible costs related to the State's response to the August 2023 wildfires and to fund the One Ohana Bank Trust Account to compensate victims of the Maui wildfires. The bill repeals general obligation bond appropriation for the Other Post-Employment Benefits Trust Fund and Pension Accumulation Fund and temporarily lifts various restrictions on the use of Major Disaster Relief moneys for Hawai'i wildfire response and extends the lapse date of certain funds set aside for this purpose. Finally, the bill requires the Department of Defense and the governor to submit reports on expenditures and federal reimbursements.

HB 2610 establishes a Disaster Relief Match Special Fund to support the local match requirements of the Federal Emergency Management Agency Maui Wildfires Hazard Mitigation Grant Program for projects that implement mitigation measures to prevent and minimize the impacts of natural hazards affecting the State; appropriates moneys into the Disaster Relief Match Special Fund; and makes appropriations to support the State's continued response to the August 2023 wildfires that affected the counties of Hawai'i and Maui.

SB 3068 appropriates funds to support the State's continued response to the August 2023 wildfires that affected the counties of Hawai'i and Maui.

SB 2143 appropriates funds to the Wildfire Management Branch of the Department of Land and Natural Resources' Division of Forestry and Wildlife to provide nonprofit organizations with grants for wildfire preparedness and mitigation programming.

SB 2284 establishes and funds a two-year program at the University of Hawai'i to develop a wildfire forecast system for the State using

See HIREP, Page 6

Future KMN Deadlines

It's important for the Kohala Mountain News to receive ads and news submissions by the following deadlines. Otherwise, submissions may not be accommodated.

May Deadlines
Ads and News: 5/10/24
Calendar: 5/17/24
Distribution: 5/24/24

June Deadlines
Ads and News: 6/14/24
Calendar: 6/21/24
Distribution: 6/28/24

Our purpose is to enhance and strengthen the community by fostering continuous communication and understanding among the various cultures, residents and constituents.

www.kohalamountainnews.com

ABOUT US

Publisher/Ad Sales Manager
Tom Morse 345-0706
Ltmorse@aol.com

Managing Editor
Maureen Garry 494-4237
kohalanewseditor@gmail.com

Layout & Calendar Editor
Annalene Williams 339-4951
kohalacalendar@gmail.com

Bookkeeper
Jill Kupitz 896-2332
jillkupitz@gmail.com

April Contributors

Jessica Andrews, Joe Carvalho, County of Hawaii, Cindy Evans, Joy Fisher, Rande Golden, Nicole Gomes, Lisa Hallett, Libby Leonard, Kathy Matsuda, Tom Morse, Wendy Noritake, North Kohala Community Resource Center, Sheri Preston, Brenda Swan, Easten Tanamoto, David Tarnas, Lynda Wallach, John Winter, Toni Withington.

Current Circulation 4,000

Letters to the Editor and Viewpoint articles must address issues affecting North Kohala and be accompanied by the author's name, address and telephone number. Letters and Viewpoints are subject to editing, and shorter submissions will receive preference for publication.

For a twelve month subscription, please send your check for \$36, made out to the Kohala Mountain News, P.O. Box 639, Kapa'au HI 96755. Be sure to include a note stating the name and mailing address of the recipient.

All material, either in part or in whole, is protected under U.S. copyright laws. ©2024.

Kohala Mountain News
P.O. Box 639,
Kapa'au, Hawai'i 96755

County Council Update

From the Desk of District 9 Councilmember Cindy Evans



Councilmember Cindy Evans represents North Kohala as part of Hawai'i County Council District 9. (Courtesy Cindy Evans)

The Parks Department announced plans to move forward with the replacement of the Playground at King Kamehameha Park. The good news is that funding has been appropriated with the approval to proceed, so the hope is to replace the playground by the end of the year.

In addition, Parks has approved the vision of a group of community volunteers to refurbish the plaza at the Kapa'au County Civic Center with the goal to create a special

gathering place for all ages to enjoy. Mahalo to their leadership.

On April 1, the County Planning Department closed the public comment period on the draft 2045 General Plan. Soon a new draft will be posted incorporating public comments and shortly thereafter forwarded for approval. I do not have a date to give you at this time. Council was told the public has several more opportunities to comment, given it will come to the County Council for action after the Leeward and Windward Planning Commissions review and comment on the plan.

I continue to work on amendments to the bill I introduced on commercial bicycle tours, considering the desire by some Councilmembers to have more guidelines on what to consider in initiating a restriction by the Council. State law allows for the restrictions of County roads and State highways to commercial business tour groups.

Housing continues to be a focus but the hot topic this season is cesspools and wastewater management. The County completed negotiations with the U.S. Environmental Protection Agency on a Countywide Administrative Order on Consent (AOC) regarding wastewater facilities that are operated by the County. The mayor's big-ticket item in the proposed capital

improvement project is \$110,000 for Hilo Wastewater Treatment Facility repair/replacement. The Director of Environmental Management is looking across the island for where the County can or will require property owners to connect to a sewage treatment plant, along with formulating a financial plan, including assessments to property owners. Lots of uncertainty at this time on

what will be proposed. The County is hoping funding and grants will be provided to property owners for cesspool conversion.

Soon classes of 2024 will graduate. Best wishes to what's next on your journey. Mahalo to teachers, coaches, family and community for supporting our youth.

Regards,
Councilmember Cindy Evans

HIREP, from Page 5

artificial intelligence.

SB 2502 requires and funds the University of Hawai'i to establish and implement a two-year program to develop web-GIS wildfire susceptibility and vulnerability maps for the State to determine which communities, landscapes, buildings, and infrastructure are most vulnerable to future wildfires.

These are just a few of the many bills that the legislature is debating

as we wrap up the legislative session.

Next month, I will provide a summary of the major bills that were approved by the legislature. If you have any suggestions on bills as we finalize these measures, please contact me anytime at my office at 808-586-8510 and reptarnas@capitol.hawaii.gov. I am grateful to be able to continue serving our community as the State Representative. Mahalo!

CALL FOR QUILTS

Are you a quilter and would like to share the work you have done with the public? Do you have a family quilt passed down generations kept safely in a closet? If so, consider sharing it for public viewing at a one-day event to be held on

July 27: THE KOHALA COMMUNITY QUILT SHOW
All handmade quilts hold stories. We would like to hear and see yours.

Please email nicolekeola@gmail.com or call 808-238-2178 for more information.

COUNTY COUNCIL

CINDY EVANS

FRIENDS OF CINDY EVANS, 59-048 OLOMANA RD, KAMUELA, HI 96743. 808-345-5810

MAMA JAM

An event celebrating mothers & motherhood



A SWEET LITTLE GIFT FOR MOM!

LIVE MUSIC • SHOPPING • ETHNIC FOODS

Saturday, May 11, 2024

9:00 am - 1:00 pm

St. Augustine's Church in Kapa'au

Celebrate the moms in your 'ohana! Join us for this celebration and find the perfect little gift for Mother's Day. Hope to see you there!

- 20 local vendors
- Plants & flowers
- Prize drawings
- Thrift Shop

All are welcome!

ST. AUGUSTINE'S

Episcopal Church in Kapa'au, Hawai'i

A place to BE the love of God and to FEEL the love of God.



Melisa Hicks, DVM



KAPA'AU VETERINARY CENTER

SMALL ANIMAL MEDICINE
DENTAL - SURGERY - X-RAY

808 889-5488

Mon, Tue, Thu, Fri 9:00 - 5:30

www.kapaauveterinarycenter.com

NKCDP Advisory Group Meeting Notes

By Lynda Wallach

The April 2 meeting of the North Kohala Community Plan Advisory Group (NKCDP AC) was presided over by vice-chair David Fuertes. In the absence of a quorum, no votes could be taken so the meeting was devoted to the reports of the various subgroups.

The **Agricultural Group** has formed several action working groups. The groups addressing issues involving land, production, housing and farmer wellness had their first meeting on February 29. The Production Group is working on an action plan involving value added products. The Farmer Wellness group generated ideas in response to the lack of appreciation for farmers, including a possible community event. The group meets the first Thursday of the month at 4:30 p.m. at the Kohala Food Hub.

The Joe Carvalho of the **Community Access (CA) group** said that the Old Mule Station and the adjoining forty-two acres have been listed for sale by Surety for \$4.5 million. The area is being considered as a possible solution to the congestion at the Pololū Lookout as it could provide space for more parking and the opportunity to separate the lookout from the trail head. Several purchasing options have been proposed, including a County purchase through the Public Access, Open Space and Natural Resources Preservation Commission (PONC), a purchase by the State, a conservation easement and a purchase by a private buyer who would transfer the property to a non-profit group or hold it for public purchase.

Representatives from PONC made a site visit to the Upolu East where eighty-eight acres are for sale. CA is hoping PONC will nominate the area, now called Upolu Point, for a priority purchase.

The seventeen-acre parcel of the old Parker Ranch duplex at Honoipu is on the market for \$7.5 million. It includes the parking lot at the end of the Old Coast Guard Road and two duplex buildings.

When asked whether PONC land can be used for agriculture, Toni Withington explained that PONC lands that are currently pasture are being used for grazing to keep grasses and invasive species

under control but that is the extent of the agricultural activities allowed at this time and that most structures are not allowed. The group meets on the first Wednesday of the month at 4:30 p.m. at the Senior Center.

Growth Management's list of recommended changes to the Draft General Plan map will focus on some large parcels including the Surety land above the banyan trees, the State land on lower Kahei Road and on Kynnersley. They are recommending that these areas be changed from agricultural to residential (urban) with the idea that they can be for mixed use including affordable housing. They are also recommending changing to an agricultural designation those areas that are defined as rural but now are used for farming.

Negotiations with the developer of the Hawi Nani subdivision continue for alternate options to the current plan. Over four hundred signatures have been collected from surrounding areas opposing the current plan. Self-Help Phase III has recently received a ten-year extension. The group meets the second Wednesday of the month at 5:00 p.m. at the Senior Center.

The **Parks, Roads, Erosion Control and View-planes (PREV)** reported that the boaters and swimmers are reaching an agreement over safety at Māhukona. PREV and Mālama Māhukona will be receiving a preview of the Parks and Recreation Māhukona signage before it is put up. The group meets the third Wednesday of the month at 5:00 p.m. at the Senior Center.

The **Utilities group** met via Zoom with Kurt Ianaba of the Department of Water Supply (DWS) who reaffirmed the DWS commitment to end the water meter moratorium for newly created lots as soon as the Hala`ula well is thoroughly tested and found capable. The well is currently down and it will possibly take six months to repair (on warranty) which means testing might not be complete for another nine months. Hawi #2 well is now working.

They also discussed the next five years of DWS Capital Improvement Projects (CIPS). Among the projects for 2026 are the repair of the Beers Road water line, replacement of the

Kaauhuhu reservoir and Hawi #1 well facility improvements. Reportedly, North Kohala has plenty of water but our distribution system needs upgrading. The group meets the third Wednesday of the month at 3:30 p.m. the Senior Center.

The **Health and Wealth Group** is addressing the issue of suicide prevention looking at whether programs like a prison-based ministry

program can be used for youth. Another resource is the Boys to Men program. The group meets the first Friday of the month at 4:00 p.m. at the Kohala Resilience Hub.

The next meeting of the NKCDP AG will be on Tuesday, May 7 at 4:30 p.m. at the Judiciary Building near the police station. The members of the community are encouraged to attend.

NKCDP ADVISORY GROUP AGENDA

MEETING TIME: Tuesday, May 7, 2024, at 4:30 p.m.

PLACE: Judiciary Building (near the police station), Kapa`au

AGENDA ANNOUNCEMENTS

PUBLIC COMMENTS ON AGENDA ITEMS
Kohala residents are encouraged to attend and voice their opinion on issues. They may even recommend actions and suggest subjects not presently addressed.

SUBCOMMITTEE REPORTS (Please see accompanying article on issues being addressed.)

- Affordable Housing - Addresses the housing needs for families in Kohala.
- Agriculture - The future of agriculture in our area.
- Community Access - Exploring ways for Kohala residents to have more mauka and

- makai access.
- Growth Management - Addresses zoning, permits and variance requests and how they affect us.
- Health and Wellness - Addresses Kohala health care infrastructure and emergency response.
- Parks, Roads, View Planes and Erosion Control - Addresses many infrastructure problems and projects.
- Utilities - Addresses all utility and waste stream issues.

Investigatory Subcommittee on Re-zoning and Agricultural Property Tax Rates - Works on Kohala input to the ongoing County reassessment of zoning and agricultural tax rate reduction criteria.

NEW BUSINESS PUBLIC INPUT AND AGENDA SUGGESTIONS FOR THE NEXT MEETING ANNOUNCEMENTS

MAHALO

TO ALL THE BUSINESSES AND SPONSORS WHO SUPPORTED OUR

7th ANNUAL CHARITY GOLF TOURNAMENT

- KOKUA TITLE SPONSOR - MAUNA KEA RESORT
- LAULIMA WELCOME BAG SPONSOR - STAN'S CONTRACTING, INC.
- KĀKO'O HOLE-IN-ONE SPONSOR - KULEANA RUM WORKS
- TROPHY SPONSOR - WATTERSON PAINTING

- Ackerman Gallery
- Affordable Housing Group
- Arakaki Store
- Cantor Bros Transport Services, Inc.
- Councilmember Cindy Evans
- Fairmont Orchid
- FootJoy Hawaii
- Hapuna Golf Course
- HCFCU
- Hawaii Forest & Trail / Kohala Zipline
- Hawaii Life Realty
- Homes for Kohala
- Hula Moon Boutique
- Island Distributing, Reyes Beer Division
- Island Harvest
- James Hustace - Kapalaea Gallery
- Jon and Dixie Adams
- Just Putterin' Around
- Kipuka`ohelo Ranch
- Kohala Dental Center
- Kohala Radio
- Kohana`iki Golf Course
- KTA Superstores
- Lehua Jewelers
- Llosh Winne Gallery
- Luana Hospitality; Lava Lava Beach Club; Huggo's; Kai Eat & Drink
- Makani Golf Course
- Mana`ola Hawaii
- Marriott Waikoloa Resort
- Mauna Kea Beach Hotel
- Mauna Kea Golf Course
- Mauna Lani Auberge Resort Collection
- Mauna Lani Golf Course
- Merriman's Restaurant
- Nanea Golf Club
- North Kohala Golf Park
- NKSCFP
- Ocean Sports Hawaii
- PEPSICO Hawaii
- Pilates of Hawaii
- Pomaika`i Cafe
- RMD Taiko
- Senator Tim Richards
- Takata Store
- Tommy Bahama
- Waikoloa Beach Resort Golf
- Waikoloa Village Golf Course
- Watterson Painting

Special mahalo to Jay Taise and his awesome team at Hapuna Golf.

NORTH KOHALA COMMUNITY RESOURCE CENTER



www.northkohala.org info@northkohala.org 808 889 5523



Kohala Artists' Co operative Invites you to the opening

SATURDAY MAY 4, 6-8 PM

Catherine Morgan Orange Cleghorn Kathleen Provazek

Underwater Creature Connections



Wendy stroking a Nassau grouper in the Caribbean.



Petting a cod in the Great Barrier Reef.

Part 1 By Wendy Noritake

I've often wondered why a fish or sea animal willingly makes a connection to a human. Maybe you've experienced this, too. It doesn't happen every time I swim in the ocean but often enough that the experience brings even more wonder and joy to the mystery that it holds.

I first noticed this connection on scuba diving trips to Australia and the Caribbean, where I could actually pet a fish. The fish were potato cods in the Great Barrier Reef and groupers in the Caribbean. I once dived with a dive master in Palau

who had been adopted by a humphead, or emperor, wrasse, a large blue-green fish with a big bump on its head and gigantic lips. The wrasse could identify this man no matter what he was wearing or if it had been weeks or months since the last dive. When we were underwater, the 300-pound emperor swam straight to the dive master to be stroked, obviously delighted in seeing his friend. It was quite remarkable.

Land animals can also feel an attraction to humans. I heard a guru, Moojibaba, say that animals will come to his ashram in Portugal to listen to his satsangs (teach-

ings). He said it's not the words that bring the animals there, but the connection to the heart, the universal consciousness. I think this is very possible to witness and experience with sea creatures.

Swimming in the waters of North Kohala, I continue to notice connections. My friend Bobbi Bryant and I swam off the first point at Māhukona, where a small porcupinefish swam to her and couldn't keep its eyes off of her. It looked directly in her eyes, its sweet face just inches away from her mask. I didn't have a camera that day, but I would have loved to have taken a photo of that precious moment.

Sometimes I will have a long-spine porcupinefish (kōkala), spiny pufferfish ('ō'opu ōkala), or a spotted burrfish ('ō'opu hue) swim over to say hello. The porcupinefish are adorable with their widespread big eyes and little mouths that look like they're smiling, making an inviting engagement.

I've had scrawled filefish (loulu) wander over to look at me as if I were some weird creature, and I probably am weird to them. Usually, they immediately dart away when approached. This fish has a long, narrow flat body, with brilliantly colored lines and dots, a

See Underwater, Page 9

Mr. K's Recycle & Redemption
ELECTRONICS RECYCLING COLLECTION



**Tues., Thurs. & Sat.
 10:00 a.m. - 3:00 p.m.**

73-5631 Kauhola St., Kona
 FREE. Open to public

Businesses, government agencies and non-profit organizations
MUST MAKE AN APPOINTMENT
 To schedule an appointment, call 808-969-1222
 Households do not need an appointment.
 For more info visit
www.mrksrecyclehawaii.com/electronic-waste.html

ACCEPTABLE DEVICES:

- Computers, laptops, tablets
- TVs and monitors (plasma, CRT, LCD & LED)
- Uninterruptible Power Supply Systems
- Computer keyboards & mice
- Printers, copiers, fax
- Mobile & Landline phones
- Digital cameras
- VCRs, DVD/Blue-ray players
- Stereo components (no speakers)
- Items NOT on this list will NOT be accepted for recycling.

State of Hawai'i Electronic Device Recycling & Recovery Law <https://health.hawaii.gov/ewaste/>



A curious scrawled filefish peeks at the camera.

KOHALA RESILIENCE HUB **"MAY DAY" KOHALA NIGHT MARKET**

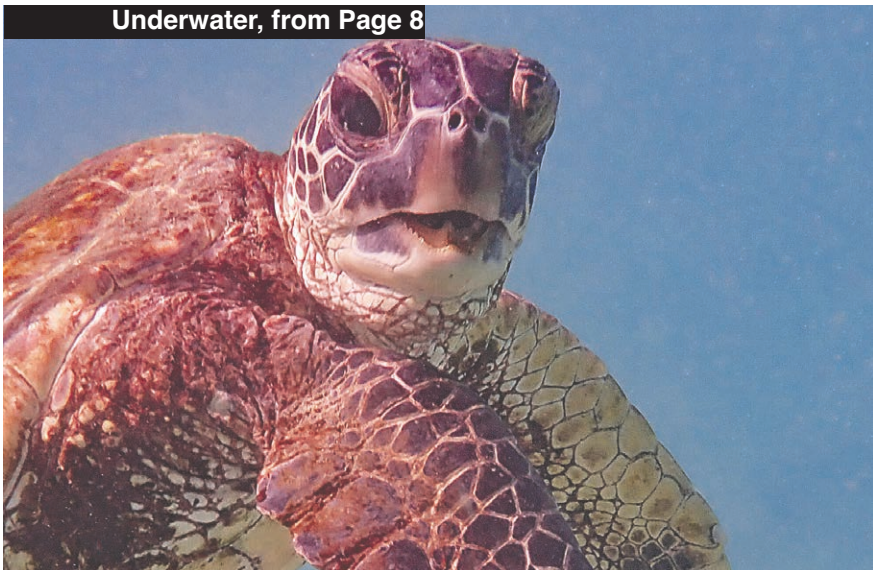
May 1, 2024, 4PM - 7PM
 Resilience Hub Barn
 Featuring: Food, Crafts, Speciality Items and Information Booths



f follow us on facebook @kohalanightmarket

The Kohala Night Market is a Program of the Kohala Resilience Hub and The North Kohala Community Resource Center

Underwater, from Page 8



The chatty Kukio honu.



Scrawled filefish posing.

tail that looks like a whisk brush, and a small mouth with a definite underbite. Over the years, numerous green turtles have appeared right beside me. At Kamano Bay (Nishimura), the honu swam toward me. I saw it in the distance swimming my way so I got my camera ready. As it approached, it came closer and closer, to the point I began using my other hand to move myself backwards. I took one last

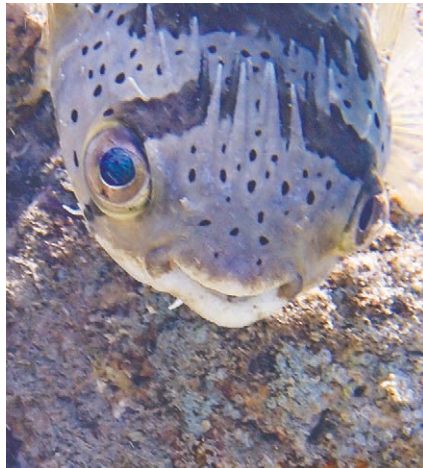
shot before the honu rammed right into my camera. We were both surprised! It turned and swam away. Recently, just south of Kapa'a, I saw a different kind of turtle, a hawksbill (honu 'ea), a type not seen very often here. I dived to get a better look at its beak, which is more pronounced than that of a green turtle; it has four "tiles" between its eyes, where a green turtle has two. This beautiful creature hung

in the ocean with me, letting me snap pictures. Hawaii Hawksbills on Maui has a program where you can submit photos of hawksbill sightings at www.hihawksbills.org. If it's identified as a new individual turtle, you get to name it. I named the Kapa'a hawksbill MakaMaka Nui (one with many good friends). Once at Kukio Bay, I was heading back to shore when a green turtle came up alongside and

looked at me, its mouth moving as if telling me how his day was going. It swam almost to the shore with me, peering and "talking" to me the entire time. Director Laura Jim of HPA's Turtle Research Program, commented on the photo. She said she'd never seen a honu turn its head at such an angle to look at a human. I felt special. Be sure to check next month's issue for Part 2 of Underwater Creature Connections.



A spotted burrfish saying "Hi!"



A smiling longspine porcupinefish.



The last shot before the honu hit my camera.

SPECIALIZING IN STRESS RELIEF AND VAGUS NERVE SUPPORT

- Clinical Hypnotherapy •Stress Relief
- Addiction Support • Stop Smoking/Weight loss • Better Sleep • Pain Relief
- Digestive and Nervous system Support • Spiritual and Personal growth

innerbalance.us
spirit.innerbalance.us
Empowering Health and Wellness
Jonmarie Kerns, CMS-CHT
808/854-7555




Algood Hawaii, LLC
REAL ESTATE IS OUR KULEANA
www.algoodhi.com
55-3410 Akoni Pule Highway, Building 2
PO 190694, Hawi, HI 96719



55-784B Hawi Road



Hawi Rd, #A,

55-784B Hawi Road
3 Bedrooms; 2 Bathrooms on One Acre. Secluded at end of Water Department Road. Surprisingly large spaces inside with huge enclosed wraparound lanai.
MLS 704993 Fee Simple \$825,000

Hawi Rd, #A,
This recently cleared 1.335 acre CPR lot on Hawi Road between Akoni Pule Highway and Kohala Mountain Road can be a perfect spot for you to build your dream Hawaii home. MLS 704151 \$449,000

HOLLY ALGOOD, PB
RB22414 | Algood Hawaii LLC
Cell 808-557-0354
holly@algoodhi.com



To Advertise In The Kohala Mountain News Call Tom
(808) 345 0706



North Kohala Women Writers Turn Out for Women's History Month Reading

By Joy Fisher

When Hawaii Writers Guild organized a public reading on the Big Island to celebrate Women's History Month recently, women Guild members from all over the island responded to the call for readers, but response from those who live in North Kohala was particularly enthusiastic.

"We had 14 readers and five of them came from North Kohala," said Joy Fisher, the public relations director for the Guild.

The idea originated with Gwyn Gorg, the Guild's events director. Gorg emceed the reading, which was held at Tutu's House in Waimea. In addition to North Kohala, participants came from Kamuela, Laupāhoehoe, Hilo, Keaau and one woman drove all the way from Pahala in the southern part of the island to take part in the reading.

Women were invited to share their writings or, in the alternative, the writings of other women writ-

ers. Each participant was given four minutes and could present fiction, nonfiction or poetry of their choice. Mothers, friends and women singly, or in community, were the most featured topics.

Some stories alluded to common experiences, such as living in patriarchy, or to very uncommon ones, such as snake dancing. One story, "Women's' Night Out," by Donna Beumler of Hāwī, envisioned one day a year when women could leave their homes and go anywhere

and do anything knowing they would be safe because men were required to stay indoors that night.

"How Belly Dancing Transformed Me," by Carla "Aleili" Orelana, also from Hāwī, as a nonfiction story that featured the author and her male snake dance partner, Suleiman Aziz.

Other North Kohala writers who participated in the event were Virginia Fortner, from Kapa'au, Linda Petrucelli from Hāwī and Diane Revell, also from Hawi.

Kohala Resilience Hub Keiki Day Camp



Photo by Kathy Matsuda

Campers challenge their culinary skills by making homemade ice cream at the Keiki Day Camp.

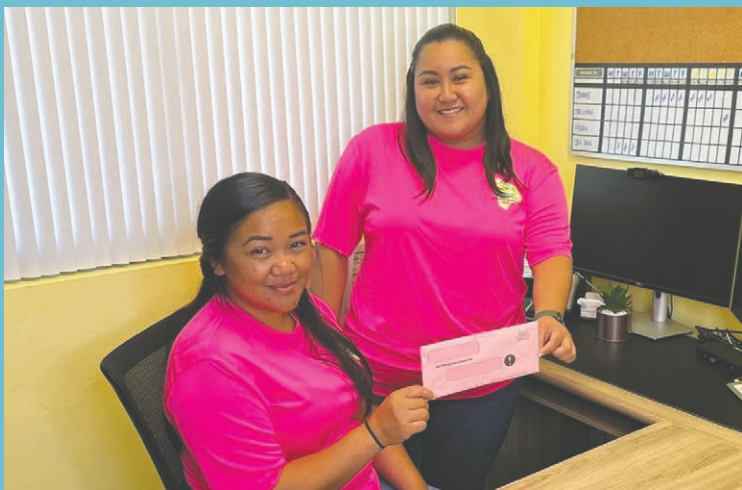
Easter Egg Hunt Fun



Photo by Kathy Matsuda

John the Easter Rabbit came to visit the "No Bunny Left Behind" Easter Egg Hunt organized by Kohala Golf Course, Roots Skatepark and the Kohala Resilience Hub.

REMEMBER TO OPEN YOUR PINK ENVELOPE



Stay WELL Stay COVERED

If you or your dependent child(ren) are covered with MedQuest be sure to open your pink envelope when you receive it in the mail. If you have questions call us (808) 930-2759 and we can help!



Mahalo for attending and being a part of Kohala Resilience Hub Ohana Fun Day - Resilience Fair on March 9, 2024

- North Kohala Community Resource Center
- Hamakua-Kohala Health Center
- Partners In Development Foundation
- Vibrant Hawaii
- Parks & Recreation
- Body Pro Therapy
- Kohala Police Department
- Kohala Fire Department
- Kohala Skate Park
- Kohala Pool

- North Kohala Archery Club
- Chubby's
- Sustainable Kohala
- Hawaii Trackers
- Waimea Resilience Hub
- Hawaii Fentanyl Task Force
- Kohala Library
- HELCO
- Arts for Everybody
- Ho'ola Na Pua
- YWAM
- Master Gardeners
- People Helping People
- Ohana Health Plant
- The Food Basket
- Michael (Twingles the Clown)
- Chubby's
- Island Style Grindz
- Fun to Jump
- Volcano Ice
- January Herron-Whitehead & Annalene Williams (facepainting)



Congratulations to the KHS Graduating Class of 2024!

- Afaga, Kristine Joy
- Afaga, Makenzie
- Ancheta Morin, Ezra
- Angelo, Taniel
- Antonio, Jasabell
- Apollo, Jennifer
- Arraujo-Medeiros, Promise
- Bartsch, Taeya
- Bermudez, Natasha
- Bosque, Roman
- Bumanglag, Arianne
- Cambra, Anela
- Carlos-Carvalho, Teygan
- Catrett, Kahaka
- Cazimero-Bautista, Ryzen
- Ching, Kody
- Chittenden, Kawehi
- Cornejo, Lluvia
- Damasco, Shaina Mae
- Duque, Denali
- Emeliano, Trini
- Faisca, Julia
- Fernandez, Joden
- Fuertes, Camille
- Galam, Maekayela
- Garro, Raquel
- Gutierrez, Kuana
- Hansen, Titan
- Hirano, Kaylee
- Ittner, Kayzen
- Kaolowi, Keycynth
- Kapeliela, Kassidy
- Kauka, Landon
- Kupukaa, Savannah
- Lactaon, Kainoa
- Lewis, Ku'upau
- Lewis, Landon
- Lum, Yvanka Leyria
- Majors, Natalie Mae
- Mattos, Wyatt
- Millet, Ashley
- Morris, Dillan
- Mundon, Eleah
- Nakamura, Kiona
- Nicolas, Princess Shalei
- Pascual, Matias
- Perez, Lulia
- Polelia, Isaiah
- Ramos, James
- Ryder, Alyssa
- Salvador, Jayline
- Santiago, Kaneesha
- Secuya, Alan
- Souza-Akau, Alexius
- Stenson, Edward
- Sugse, Tatiana
- Tayan-Germano, Daysha Lynn
- Tayan-Mathews, Shaelynn
- Thomas, Keilla
- Van Housen, Adela
- Woods, Kaleolani
- Yamamoto, Zen



Safety Improvements Proposed Near Schools: Public Feedback Requested

The County of Hawaii has proposed traffic safety improvements on roads fronting Kohala Middle School and Kohala Elementary and High Schools. Scan the QR codes with your phone to see maps showing the projected traffic improvements. As the maps will be too small to see clearly on your phone, forward the images to your email address to view on a larger screen. Please send comments by May 29 to cindy.evans@hawaiicounty.gov.

KHS & KES School Zone Safety Improvements



Scan here to see the maps

KMS School Zone Safety Improvements



Scan here to see the maps

Courtesy of Hawaii County

Gill's
LANAI
Fresh. Local. Tasty

We're open
Tue - Sat: 11am - 7:30pm
Live music Thu, Fri & Sat
from 4:40 - 7:30pm
Call to place an order
or dine in on our lanai

808.315.1542

OLU OLU mai o'e

SECRET PHRASE FOR THE MONTH OF MAY TO UNLOCK FABULOUS DISCOUNTS:
FEED YOUR MOM TACOS AND TELL HER SHE'S PRETTY



& 2ND HOME SERVICES, LLC
"PERSONALIZED PROPERTY SOLUTIONS FOR YOU"



PUBLIC FORUM

Estate Solutions Made Simple
OPTIONS FOR YOU: 1031 * Sale/Leaseback
* Rentals: long or short-term? Sat. 5/11, 1 PM
54-3876 Akoni Pule #3 upstairs behind Ackerman Gallery *
Kapa'au. Credentials at www.kre2.com

April K. Lee, RB, BA 808-989-5995



KOHALA VET CLINIC

Adjacent to Aloha Gas
Akoni Pule Hwy, Kapa'au
Open M-F 8am - 5pm



889-6405

Dr. Daryl Stang
rokuhawaii@gmail.com



Kohala High School Recognizes Performance with Academic Honors

Congratulations to these Kohala High School students who made the Q3 2023-2024 Principal's List with a G.P.A. of 4.0+:

- Afaga, Makenzie • Blanco, Ascher • Douglas, Zalea • Emeliano, Gabriel
- Hansen, Titan • Kimball, Christine • Kuhr, Cyrus • Kupukaa, Savannah
- Majors, Natalie Mae • Miyamoto, Ayla • Perez, Kalea • Perez, Eden
- Salvador, Jayline • Salvador-Libron, Isaac • Sasaki, Averie
- Thomas, Keilla • Van Housen, Adela • Walsh, Kirah

Congratulations to these Kohala High School students who made the Honor Roll with a G.P.A. of 3.5-3.99:

- Arraujo-Medeiros, Promise • Basilio, Jussaine • Baun, RC
- Belmarez, Mateo • Cambra, Kalena • Cambra, Anela • Cornejo, Lluvia
- Damasco, Shaina Mae • Emeliano, Trini • Fuertes, Camille
- Godoy, Madisyn • Hawkins, Leah • Heu-Mathieu, Amillio
- Howard, Liam • Jose, Jensel Merice • Kaai, James-Conrad
- Kapeliela, Kassidy • Kawe, Terongomau awa wai • Lucas, Noreen
- Matsuda, Kenneth • Millet, Ashley • Nakamura, Kiona
- Nicolas, Princess Shalei • Olson, Chavis • Ontiveros, Mari
- Ramos, James • Rees, Soul • Stenson Jr., Edward
- Suetos, Gabriel Timothy • Sugse, Tatiana • Terrell, Pela
- Valenzuela-Conte, Kailani • Van Berg, River • Wilson, Hezekiah

Congratulations to these Kohala High School students who earned Honorable Mention with a G.P.A. of 3.0-3.49:

Honorable Mention (3.0-3.49)

- Afaga, Kristine Joy • Almazan, Margarrette • Amnuankhana, Ponpailin
- Ancheta AhPuck, Sheldon • Ancheta DeMello, Kaleilani
- Apollo, Jennifer • Ariola, Jered • Ariola, Jazelle • Artiga, Ricardo
- Bautista, Alyssa Marie • Bolosan, Aadyne • Carvalho, Lilyanna
- Carvalho-Soares, Kenneth • Carvalho, Loryn-Rose
- Cureg, Princes Rain • Damasco, Barbie Def • Drew, Nicole
- Elmer, Adam • Faisca, Alexander • Fernandez, Joden
- Francisco, Rhobie Kyle • Franco, Aundrea • Galam, Maekayela
- Hensley, Trevon • Hirano, Kaylee • Hirayama, Kylea • Hook, Esaias
- Hooke, Nainoa • Hutchinson, Hiro • Ishimine, Ava-Grace
- Jessop, Madelyn • Kaitoku, Daylan • Kauka, Layden • Kemper, Remy
- Keohulua, Haumea • Keyes, Kymani • Kobeney, Lucky • Leong, Ihilani
- Lum, Yvanka Leyria • Mackillop, Solomon • Mackowiak, Crimson
- Manantan, Jordan • Marquez, Sydnie • Marquez, Kalia
- Medeiros, Evany • Medeiros, Jeremiah • Morris, Benjamin
- Murry, Dante • Oandasan, Dillon • Pascual, Tyler • Pascual III, Matias
- Perez, Lulia • Perez-Bobek, Halia • Prentice, Jean Luke
- Roxburgh, Uriah • Salvador, Mary Joy • Sandlin, Jaden
- Sandlin, Julian • Secuya, Destinee • Stevens, Stacenwayne
- Tabiolo, Royden • Tayan-Germano, Daysha Lynn • Terry, Kiara
- Valdez, Erinelle Irish • Viernes, Alston Hezekiah • Yee, Teyla-Rose

WEEKLY EVENTS IN MAY 2024

DAY	START	END	EVENT	VENUE	CONTACT (808)
M-S	8:30AM		NARCOTICS TALK STORY	RAINBOW CAFE	
MON	9AM		SENIOR CLUB @ CIVIC CENTER	KOHALASENIORS@GMAIL.COM	
	11:30AM		SENIOR DANCE CLASSES	KIC	238-6111
	4PM	5:30PM	TOOL LIBRARY	54-3842 AKONI PULE HWY	213-7779
	4:30PM		RMD TAIKO CLASSES	HUB HALE	895-2025
	5:30PM		DEFIANT BRATS (WOMENS' AA)	AINAKEA HOME	747 9627
TUE	8AM	9AM	NARCOTICS ANONYMOUS	NEAR SKATE PARK	805-452-9501
	8AM	9AM	TAI CHI WITH PETER BEEMER	OUTSIDE HISAOKA GYM	895-0737
	8AM		YOGA/PILATES BEGINNER CLASS	OUTSIDE HISAOKA GYM	333-8275
	4:30PM	6PM	BELLY DANCE FITNESS	CALL FOR LOCATION	238-6111
	4:30PM		KOHALA CARES FOOD DRIVE	ST AUGUSTINE'S	ALOHAPETER@YAHOO.COM
	5PM	6PM	CHOIR PRACTICE	ST AUGUSTINE'S	889-5390
	5:30PM	7PM	PICKLE BALL	HISAOKA GYM	333-8712
	6PM	8PM	TABLE TENNIS/PING PONG	OLD COURT HOUSE	889-1099
WED	10AM	11AM	STORY TIME (NOT 5/8)	NK PUBLIC LIBRARY	889-6655
	12PM	6PM	THRIFT SHOP	ST AUGUSTINE'S	889-5390
	2PM	4PM	OPEN GUIDED ART STUDIO	ARTISTS' CO-OP	960-3597
	2PM	3PM	LEGO CLUB: 5/1, 5/22 BOARD GAMES: 5/15, 5/29 KEIKI CRAFT:	NK PUBLIC LIBRARY	889-6655
	3:30 PM	4:30PM	RMD TAIKO CLASSES (NOT 1ST WED)	HUB BARN	895-2025
	6PM	8PM	FREE MEAL AND BIBLE STUDY	KALAHIKIOLA CHURCH	218-4872
	6PM	7:30PM	SEIBUKAN KARATE ACADEMY	HISAOKA GYM	889-1828
	7PM		SPIRITUAL HEALING SERVICE	54-3876 AKONI PULE STE 4	989-5995
	7PM		ALCOHOLICS ANONYMOUS	AINAKEA HOME	747 9627
THU	8:30AM	10AM	TOOL LIBRARY	54-3842 AKONI PULE HWY	213-7779
	9AM	10:15PM	HEALING CIRCLE FOR ADDICTS	NANI'S GARDEN	805-452-9501
	5PM		OPEN CIRCLE MEDITATION (NOT 2ND)	KEOKEA BEACH PARK	889-5390
	5:30PM	7PM	PICKLE BALL	HISAOKA GYM	333-8712
	6PM	8PM	TABLE TENNIS/PING PONG	OLD COURT HOUSE	889-1099
	6:30PM		AL ANON MEETING	KALAIKIOLA CHURCH	802-334-8447
FRI	8AM		NARCOTICS ANONYMOUS MEETING	WILEY HALL ON IOLE	805-452-9501
	8AM	9AM	TAI CHI WITH PETER BEEMER	OUTSIDE HISAOKA GYM	895-0737
	5:30PM	7:30PM	FRIDAY FUN NIGHT: UKULELE WITH HOPE KEAWE DINNER AND TEEN NIGHT	ST AUGUSTINE'S	889-5390
SAT	8AM	1PM	COMMUNITY FARMERS MARKET	KAMEHAMEHA PARK	225-3666
	8AM	12PM	FARMERS MARKET	THE HUB	313-338-7090
	8AM	10AM	TOOL LIBRARY	54-3842 AKONI PULE HWY	213-7779
SUN	6PM	7PM	SEIBUKAN KARATE ACADEMY	HISAOKA GYM	889-1828
	7PM	8PM	RECOVERY DHARMA MEETING	HUB BARN	805-452-9501



Olena Gallery

Our Featured Artist for May is **Mark Johnson**

Come and join us for the Opening Reception **Friday, May 3, 3-6pm**

Open daily 10-5
Hawi, at the Hawi Road Intersection
@olenagallery.4636
www.olenagallery.com
(808) 345-1779




RAISE YOUR VIBRATION

An Experiential Store:

- Sit Under the Copper Pyramid • Relax in the Scalar Field
- Browse for Crystals, Chimes, Native Flutes & Drums, Singing Bowls, Fairy Doors, Essential Oils, Jewelry and Items That Can Help You

Experience Peace and Deep Joy.
Downtown Hawi, Next to Algood Hawaii

808-796-3333
www.ryvhawaii.com





Photo by Tom Morse

Local Boyz are Kohala's team in the Kupuna Softball League. Twenty-two teams play on the Big Island from January through June. A tournament for this island will be held in July in Hilo, followed by the state tournament in August.

Bottom Row: Altery Murai, Tony Ayoso, Kelly Asai, Harry Cabrera
 Second Row: Greg Chilton, Greg Galan, Stan Gonsalves
 Third Row: Guy Nakamura, Jim Scancelli, Steve Maeda, Ted Matsuda
 Fourth Row: Eddie Kise, Andrew Stevens, Ben Bruno
 Fifth Row: Steve Nakamura, Jim Trump, Matthew Roxburgh

Kalahikiola Church
 "Since 1832, proclaiming Jesus Christ to Kohala"
 Sunday Worship and Children's Program 9:30 am
 Tuesday Prayer 11:30 am
 Wednesday Bible Study 7 pm
 www.kalahiolacc.com
 53-540 'Iole Rd., Kapa'au
 Pastor Mark Blair
 E Komo Mai!

Gospel of Salvation Kohala
 55-146 Kokoiki Road
 Service: Sunday 9:00 AM
 Adult Bible Study: Monday 7 PM
 Prayer Meeting: Friday 7 PM
 Pastor Kawika Kihara
 www.gos-kohala.org

Kohala Baptist Church
 Across from Makapala Retreat
 'Come to Me, all you who labor and are heavy laden, and I will give you rest.'
 (Matthew 11:28)
 Please join us Sundays for Bible study at 9 AM in the chapel and Worship at 10:30 AM outside under the Royal Poinciana tree
 Pastor Steven E. Hedlund (808)889-5416
 Follow us on Kohala Baptist Church

The Bahá'í Faith
 "May we unite as the waves of one sea"

 Please join us for an interfaith gathering with prayers and songs for Healing.
 May 11th
 3-4:30 PM in Hawi, HI
 Call The Loseys at 808-551-0665 for information

HINOKAWA ELECTRIC LLC
 License C-16154 C-38804
 P.O. Box 280
 55-768 Hawi Rd.
 Hawi, HI 96719
 rod@hinokawaelectric.com
808-960-5738
 Locksmith
 808-889-5613
 High Voltage Specialist
 Parts Department
 888-581-0343 | 887-733-9123

 Authorized Sales and Service Dealer

 Authorized Sales & Service Dealer

Hair Spectrum
Family Salon

 Open:
 Tue - Fri 8:30 - 5:30
 Sat 9 - 3
 889~5077

J. Lorenzo Construction
QUALITY CONSTRUCTION AT ITS BEST

- Reasonable prices
- Fast turnover time
- 35 years of experience with projects done all over Kohala
- Residential, commercial, industrial or remodeling

John Lorenzo
 Lic# BC13017
896-0432
 lorenzoboyz@gmail.com

KOHALA HONGWANJI SHIN BUDDHISM
 May Service
 Sunday, May 19, 10:00 a.m.
 On the right approx. one mile past the Kohala Middle School in Halaula
 Rev. Masanari Yamagishi
(808)798-2075

Kohala SDA Church
WHERE FRIENDSHIP MEETS FELLOWSHIP
 Saturday Services:
 Sabbath School: 9:30 AM
 Divine Service: 10:45 AM

 Potluck-Fellowship Lunch every Sabbath
 55-3361 Akoni Pule Highway, Hawi HI
 (808)889-5646
 Kohalasd.com

EBIKES HAWAII
 Located In Hawi Town
RENTALS

 Rocky Mnt. Growler Lil' Buddy Wild Flow
 Call or Text: 808-796-0620
 ebikeshawaiiibigisland.com

Temple of Spiritual Healing & Education
 Sunday Worship Service 10 AM
 Wednesday Spiritual Healing Service 7 PM
 We Have Proof; Life is Forever
 54-3876 Akoni Pule Hwy, Upstairs Kapa'au Vet & Behind Akerman Gallery
 Meetings also ON ZOOM
 Contact Rev. Lee:
 TSHE.org@Protonmail.com
 808-989-5995

ST. AUGUSTINE'S
 Episcopal Church in Kapa'au, Hawai'i
 E komo mai!
 Sunday services 7 am & 9 am
 Keiki Sunday School 9 am
 Facebook Livestream 9 am
 www.staugustineskohala.com

Sacred Heart Catholic Church
 Hawi, Hawai'i • The Welcoming Church
 Masses: Saturday 5 pm
 Sunday 7 a.m. • 9:30 am
 Weekday Mass: Monday - Friday at 7 am
 Adoration: 1st Friday 6:30 - 7:30 pm
 Rev Elias Escanilla 808-889-6436

Kohala High School Girls Softball Team



Courtesy of Kohala High School

Left to Right: Lluvia Cornejo, Sydnie Marquez, Daysha Tayan-Germano, Kalie Marquez, Mahea Pang, Faith Alejandro-Cazimero, Kailani Valenzuela-Conte, Kaneesha Santiago, Camille Fuyertes, Savannah Kupuka'a
Not pictured: Trinity Keawe
Coach: Mikayla Kekoa
Assistant Coach: Tammy Elarco

KHS Culinary Students Shine at Golf Event



KHS Culinary students (left to right) Lluvia Cornejo, Ashley Millet, Joden Fernandez, Taniel Angelo and Jennifer Apollo.

Kohala High School Culinary students showcased their skills at the Hawaii Restaurant Association Top Tracer Golf Event from March 25-29. The event serves as a fundraiser for the Hawaii Restaurant Association Education Foundation, which channels the raised funds towards providing scholarships and teacher grants to ProStart culinary students in Hawaii's high schools.

The Hawaii Restaurant Association Educational Foundation ProStart Culinary Program was established with a vision to boost Hawaii's restaurant and hospitality industry by offering educational programs, fostering industry engagement, and promoting the industry to upcoming generations.

Kohala High students uses their skills to create Pipikaula Poke and

Uala Haupia Pie.

Special thanks to Hawaii Prince Hotel and Chef Jeremy for lodgings and use of their kitchens.



Pipikaula poke.

SUNSHINE
POHAKU

STORY BY KALACORP
ILLUSTRATED BY KRISTI KRANZ

WATS UP?

TRYING FOR ROUND UP SOME POHAKU FOR PLANTATION MARKET... GOING OPEN SOON!!!

WE NEED ONE BOULDER APPROXIMATELY 16"-24" ACROSS WITH ONE FLATTISH FACE.

AND WE NEED STONES FOR MAKE BENCHES ABOUT 6"-8" SQUARE, AND 16"-24" LONG.

TABLE

BENCH

PLANTATION MARKET

POHAKU CAN COMMUNICATE WITH PEOPLE WHEN THEY WANT TO. BET THERE ARE SOME POHAKU FROM THIS AHUPUAA THAT WOULD LIKE TO "HANG-OUT" IN HAWI FOR THE NEXT COUPLE HUNDRED YEARS....SO, WE'RE PUTTING OUT THE INVITATION FOR FRIENDLY POHAKU!

SO, COME ON DOWN!

JOIN US AT PLANTATION MARKET!!!

DATS HAU!!!

SUNSHINE

MONTHLY CALENDAR MAY 2024

DATE	DAY	START	END	EVENT	DESCRIPTION	VENUE	PHONE
4/28	SUN	4:30 PM	6:00 PM	HAWAI'I WILDFIRE TALK	WALKER HALL	ST AUGUSINE'S	808-889-5390
5/1	WED	4:00 PM	7:00 PM	KOHALA NIGHT MARKET	VENDORS & ENTERTAINMENT	HUB BARN	808-889-5523
5/1	WED	4:30 PM		KOHALA COMMUNITY ACCESS GROUP	NKCDP	OLD COURTHOUSE	IMUAKOHALA@GMAIL.COM
5/1	WED	7:00 PM		TEMPLE OF SPIRITUAL HEALING	GRIEF SUPPORT GROUP	54-3876 AKONI PULE STE 4	808-989-5995
5/3	FRI	3:00 PM	6:00 PM	MARK JOHNSON	OPENING RECEPTION	OLENA GALLERY	808-345-1779
5/3	FRI	4:00 PM		HEALTH & WELLNESS GROUP	NKCDP	KOHALA RESILIENCE HUB	IMUAKOHALA@GMAIL.COM
5/4	SAT	8:00 AM	11:00 AM	THRIFT SHOP		ST AUGUSINE'S	808-889-5390
5/4	SAT	12:00 PM	4:00 PM	CREATIVE COLLAGE	ART SHOW	ARTISTS' COOPERATIVE	808-854-1058
5/6	MON	5:00 PM	6:30 PM	CHESS CLUB	ALL AGES WELCOME!	NK PUBLIC LIBRARY	808-889-6655
5/7	TUE	4:30 PM		ADVISORY GROUP MEETING	NKCDP	JUDICIARY BUILDING	IMUAKOHALA@GMAIL.COM
5/8	WED	9:00 AM		AFFORDABLE HOUSING GROUP	NKCDP	POMAIIKA`I CAFE	IMUAKOHALA@GMAIL.COM
5/8	WED	5:00 PM		GROWTH MANAGEMENT GROUP	NKCDP	OLD COURTHOUSE	IMUAKOHALA@GMAIL.COM
5/11	SAT	9:00 AM	1:00 PM	MAMA JAM	MOTHER'S DAY BAZAAR	ST AUGUSINE'S	808-889-5390
5/13	MON	5:30 PM	7:00 PM	POETRY WORKSHOP	BRING YOUR POEMS BY TO WORK ON AND SHARE!	NK PUBLIC LIBRARY	808-889-6655
5/14	TUE	11:00 AM	12:00 PM	BOOK CLUB	HORSE BY GWENDOLYN BROOKS	NK PUBLIC LIBRARY	808-889-6655
5/15	WED	3:30 PM		UTILITIES GROUP	NKCDP	OLD COURTHOUSE	IMUAKOHALA@GMAIL.COM
5/15	WED	5:00 PM		PARKS, ROADS VIEW PLANES GROUP	NKCDP	OLD COURTHOUSE	IMUAKOHALA@GMAIL.COM
5/16	THU	9:00 AM	11:00 AM	SACRED HEART FOOD BASKET		SACRED HEART CATHOLIC CHURCH	808-889-5115
5/18	SAT	9:00 AM	1:00 PM	HOA'ĀINA STEWARDSHIP DAY	NIULI'I HALA GROVE REGISTRATION OPENS MAY 6 REGISTER AT: KOHA.LA/HOAAINA2024	KĒŌKEA BEACH RD	808-887-6411
5/20	MON	5:30 PM	6:30 PM	SOUND BATH	UNIQUE IMMERSIVE EXPERIENCE OF BEING "BATHED" IN SOUND.	NK PUBLIC LIBRARY	808-889-6655
5/23	THU	4:30PM	7PM	AGRIICULTURE MEETING	CDP & FOCUS GROUPS, POTLUCK BY HFF	HUB BARN	IMUAKOHALA@GMAIL.COM
5/28	TUE	5:30 PM		TINY CHURCH CONCERTS	FEATURING ANNE PONTIUS & SHARON SAUER	ST AUGUSINE'S	808-889-5390
5/28	TUE	6:00 PM		HAWAII FARMERS UNION UNITED	FACEBOOK.COM/KOHALACHAPTERHFUU/	HUB BARN	KOHALA.HFUU@GMAIL.COM
5/29	WED	4:00 PM		RESTORATIVE YOGA THERAPY CLASS	WITH CARLA ORELLANA - BY REQUEST	CALL FOR LOCATION	808-238-6111

Email calendar listings to: kohalacalendar@gmail.com
 Subscribe to our montly calendar on <https://kohalamountainnews.com/events/month/>



Did you know?
The Kohala Mountain News is online at
kohalamountainnews.com
Now SEARCHABLE
back to 2011



CARTOW KOHALA

- 24-hour Towing, Recovery, and Lock-out Service
- Vehicle Repairs
- Oil Changes and Service
- Equipment Hauling
- Vehicle Safety Inspections
- Propane

Open Monday - Friday 10 - 6,
 Saturday 10 - 2, closed Sunday

Located at the bottom of Hawi Rd.
 KAD, Inc. dba Cartow Kohala

889-1061

The Premier Property Managers in North Kohala

Mid- & Long-Term Home Rentals • Second-Home Property Management

Safeguarding your investment. Second homes and investment properties benefit from our professional management to ensure security and your best financial return, not to mention your peace of mind! We take care of your property like it's our own. Locally owned and operated.

Contact us at 808-987-0509 or email pm@kohalapacificrealty.com for more about our affordable, custom solutions for your home.



Heidi Hernandez
OWNER / PRINCIPAL BROKER
 REALTOR(B) RB-23485



Kim Flitercraft
PROPERTY MANAGEMENT &
 REALTOR(S) RS-83443



KOHALA
 Pacific Realty

808-889-5181 | KohalaPacificRealty.com
 Located in Downtown Hawi | SERVING HAWAI'I SINCE 1984



Banner Year for Kohala Elementary’s School Garden

By Libby Leonard

As another school year is about to wrap up, the Kohala Elementary School’s Mālama Pono Garden closes out a banner year of growth on many levels.

Located off a dirt road on Akoni Pule Highway in front of the school, the lush garden began in 2010 as a response to the needs of students and to address food security in the community.

Currently run by Heather Brovsky, the garden sees around 350 students from pre-K to fifth grade. They contribute to the garden through weekly Garden Discovery classes, where they get hands-on, experiential learning and get to harvest food for themselves and their families.

“They love coming and I’ve found more and more that the garden is the teacher, and they are their own guides for what they are interested in, cultivating their sense of presence and wonder,” said Brovsky.

Recently they completed a fundraiser to buy a personal weather station that measures temperatures, humidity, pressure, rainfall, wind speed and direction.

Since it’s been hooked up, Kohala residents have been able to look up local weather through their station on the Weather Underground website.

Thanks to a generous grant in the last year, the garden was also able to expand from two acres to five acres. They reclaimed those three acres from dense, 16-foot-high guinea



Photo by Easten Tanamoto

Volunteers and keiki take moment to pose during the tree planting community work day, sponsored by the Fruit Tree Planting Foundation in partnership with the Hawai’i Island School Network Garden.

grass. It was cleared out largely by Jon Taylor, who does garden maintenance.

“I win the lottery every day,” Taylor said of working there, adding that he likes being with the kids.

After the land was cleared, volunteers helped plant fifty food trees, including ‘ulu, coconut, avocado, mango, cacao, lychee, and starfruit. These went in alongside the existing rollinia, citrus, soursop, papaya and banana trees. They were also able to plant twenty native trees such as koa, sandalwood, and kukui. They added a farm field of Hawaiian staple crops like kalo, ‘uala and pala’ai. Finally, they planted a new Hawaiian La’au Lapa’au medicinal garden with ‘olena, mamake, mulberry, aloe, noni, and cotton, all of which aid not only in food security but cultural preservation.

The garden has also become a

sanctuary for others. She said teachers bring their classes there for lessons, reading time, oli (chant) and kilo (silent observation).

While Brovsky’s position is funded, the garden isn’t, so its progress has come through fundraising, donations, and partnerships with others. These organizations include the Fruit Tree Planting Foundation, the Hawai’i School Garden Network, and Organic Matters in Kona, who donates truckloads of compost.

“People are incredibly generous all the time,” Brovsky said.

She also said if they have extra food in the garden after feeding the kids, they sell it to Kohala Grown and through the Kohala Food Hub, where the funds go right back into the program.

The garden is also supported by a network of intergenerational volunteers with youth mentors from the

local middle school and high school, and community members who serve as guest teachers. Last summer, the garden hosted workshops for the community led by guest teachers on syntropic agroforestry, Korean Natural Farming, and composting. She hopes to do more workshops over the summer.

“I just like involving the community in the garden because there are so many incredible people in our community that are masters of their craft or skill,” she said, adding that seeing them also gives the kids the sense that there are so many things they can do in the world that are productive and contribute to the community.

Moving forward, Brovsky said they are still hoping to build more pig-proof fencing. Someone had also started building a processing facility near the garden on the property, and they hope to one day finish that so they could realize their vision of a farm-to-cafeteria program.

Until then, it’s another year in the books for Kohala’s keiki learning how to be good stewards of the land. “We take care of the garden and the garden takes care of us,” Brovsky said.

If anyone wants to connect, share plants, or potentially offer a workshop in the garden, please contact Malama.Pono.Garden@gmail.com. To donate, please visit: bit.ly/3PwsomE.

Lastly, if you’d like to check the weather through Mālama Pono’s weather station, go to bit.ly/49BPTrS.

CHIPS AHOY 7-13 OZ \$6.99 2/\$7	AMANO KAMABUKO 5.5 OZ \$3.99 \$2.19	PEPSI 24 PACK ASST FLAVORS \$18.99 \$12.99	MEADOW GOLD ORANGE JUICE 64 OZ \$7.19 \$4.99	GOLD LEAF CHICKEN THIGHS 5 LB \$11.99 \$7.69
FRANKS FOODS FRANKS 16 OZ \$7.99 \$4.99	MID PAC SAUCES 12 OZ \$5.99 \$3.99	SKIPPY PEANUT BUTTER 16.3 OZ \$4.99 \$3.19	MEADOW GOLD ICE CREAM 48 OZ \$8.59 \$5.89	MAYS BEEF PATTIES 32 OZ \$15.99 \$9.99

Takata STORE

“Always leave with a Smile”

HOT DEALS FOR 5/1-5/14/24
OPEN:
MON TO SAT 8AM - 7PM
SUNDAY 8AM - 1PM
(808) 889-5413